

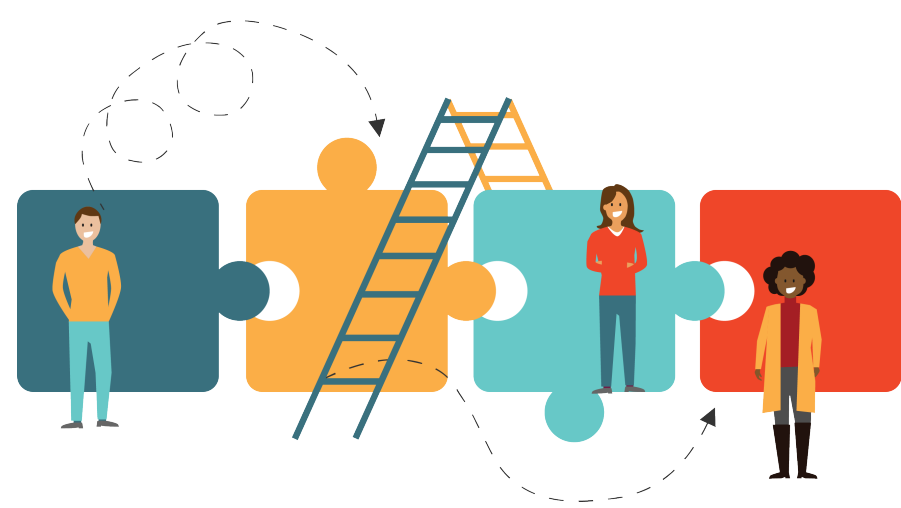
What we heard:

Our members have met the many, unexpected challenges of COVID with resilience and creativity.

Our members have been able to leverage some key assets...



Our teams have been amazing - dedicated, committed, collaborative, creative staff have adapted to whatever challenge COVID has thrown at them. Responsive and empathetic leaders who listen have helped our organizations respond.



Strong community relationships and partnerships have been critical for members to lean on for support.



Our physical buildings have remained a key “home-base” for staff and community even as we sheltered at home. PPP Loans have helped many members breathe at least a little easier.